



PURESPIN PRPTM

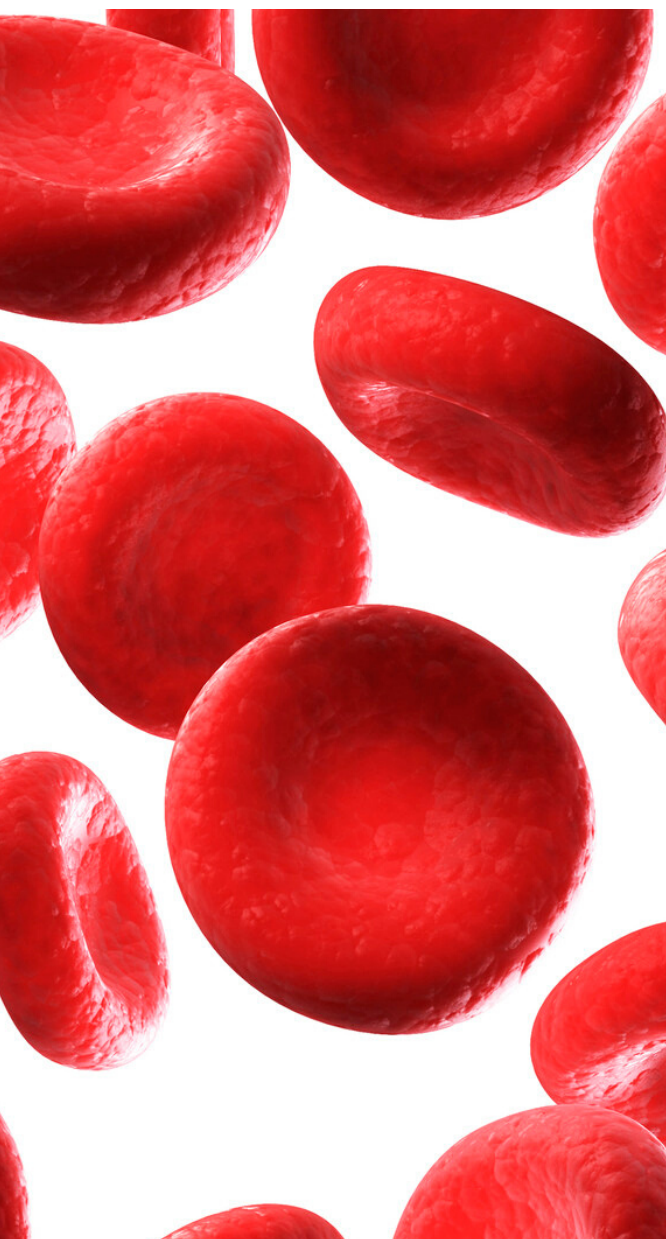
Advanced Platelet Rich Plasma System

QUICK. SAFE. EFFECTIVE.

The Purespin PRP® system delivers the highest amount of viable platelets in 3 easy steps!



CONCENTRATING KIT OPTIONS



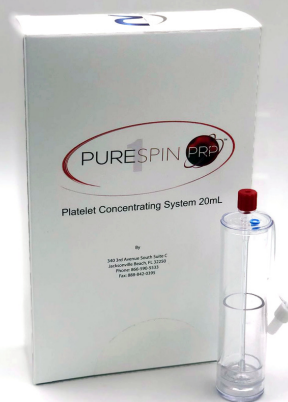
1-MINUTE SPIN

1-minute - 4000 RPM

5-8ML PURE PRP END VOLUME

- Lowest Cost per mL
- \$5.95 Price per mL of whole blood

20 mL



6-MINUTE SPIN

1-minute - 4200 RPM
5-minute - 4200 RPM

5ML PURE PRP END VOLUME

Final volume of pure PRP is customizable

30 mL



6.5-MINUTE SPIN

1.5-minute - 3800 RPM
5-minute - 3800 RPM

7ML PURE PRP END VOLUME

Final volume of pure PRP is customizable

60 mL



POWERFUL CONCENTRATE

Pure Extraction & Transfer
of Powerful Regenerative
Adipose Concentrate.

Uniquely equipped to
completely remove oil
contaminants & effluent
residuals while securing a
robustly concentrated
adipose treatment sample.

FAT





- 1 DOUBLE SPIN**
True PRP Concentrated Double Spin Closed System
- 2 FDA CLEARED**
FDA Cleared and ISO Certified
- 3 HIGHEST PLATELET RECOVERY**
Highest Platelet Recovery yield of 91%
- 4 DELIVERABLE PLATELETS**
Greatest concentration of deliverable Platelets : 6-11 times
- 5 PERFECT WBC BLEND**
2% Granulocytes recovery with the perfect blend of WBCs
- 6 LOW RBC**
1% Hematocrit - Lowest concentration of RBC
- 7 PROCESSING TIME**
Short processing time

PURESPIN PRP™

7 Reasons to Choose Purespin PRP System



PURESPIN PRP™



QUICK

Sophisticated design provides the fastest 1 & 2 Spin PRP system on the market. Complete 2 spin cycles totaling 6 minutes!



SAFE

Purespin PRP® is the most advanced and innovative concentrating PRP system with a unique self-sealing valve port and chamber aspirating disc.



EFFECTIVE

The Purespin PRP® system contains a clinical dose of concentrated deliverable platelets in 3 easy steps.



340 3rd Ave. S
Jacksonville Beach, FL 32250
866-590-5533

www.refineusa.com | www.purespinprp.net

Regulatory Status: FDA Cleared 510(k) Class II medical device. PureSpin PRP is intended for the safe and rapid preparation of autologous platelet-rich plasma (PRP) from a small sample of blood at the patient point of care. The PRP is mixed with autograph or allograft bone prior to application to an orthopedic surgical site. 510 (k) number: BK050055